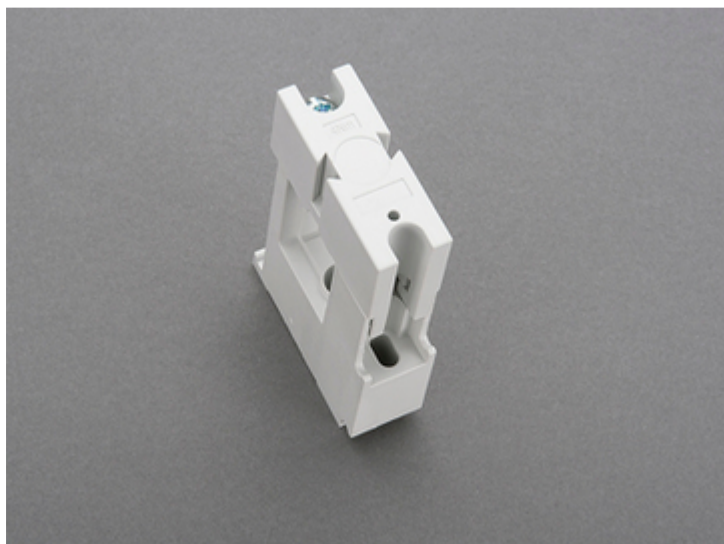


busbar support (01 116)



Description

Article

Part No.: 01 116

busbar support

1-pole, for connection to 01 231 and individually mountable
for double T profile

System

60Classic

Product group 06

Subgroup 03

pack size 4

EAN 4021267011161

Advantages of the product

Suitable as centre supports, with internal screw holes.

Can be used for connection to 3-pole busbar support 01 231.

Catalog page 2015 : 2/3, 2/35

eCl@ss 6.1 27400607
eCl@ss 7.1 27400607
ETIM 4.0 EC001166
ETIM 5.0 EC001166

Approvals

Standards

IEC 61439-1:2011

Approvals

UL, Germanischer Lloyd



for UL feeder circuits >250V

Type number: S635-L

UL file: E123577, UL category (for USA): NMTR <http://www.ul.com>

CCC approval: no certification required

Product data

Electrical data

Rated voltage (IEC) AC: 690 V

Rated voltage (UL) AC: 600 V

Power dissipation:

The power dissipation at a typical load of 80% of the rated current results to 0 W.

(The power dissipation for operation with rated current would be 0 W.)

Rated surge voltage U_{imp} : 8 kV

max. permitted voltage (IEC) AC: 1000 V

max. permitted voltage (IEC) DC: 1500 V

Kurzschlussfestigkeit:

Stoßstromfestigkeit > 50 kA bei Schienenträgerabstand 500 mm

weitere Werte im Kurzschlussfestigkeitsdiagramm

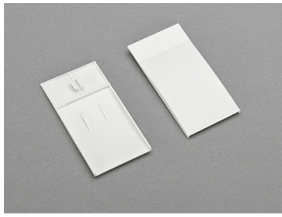
Mechanical data

W x H x D: 24 x 72 x 111
Weight: 13 kg/100
Poles: 1-pole
for busbars: double-T section

Material properties

Main temperature stability 125°C,
body: self-extinguishing in acc. to UL 94,
creepage resistance CTI 200,
halogen-free
Screws: screw +/- (PZ2), galvanized, chromized

Accessories



01 373

end cover

for busbar supports 01 116 and 01 132